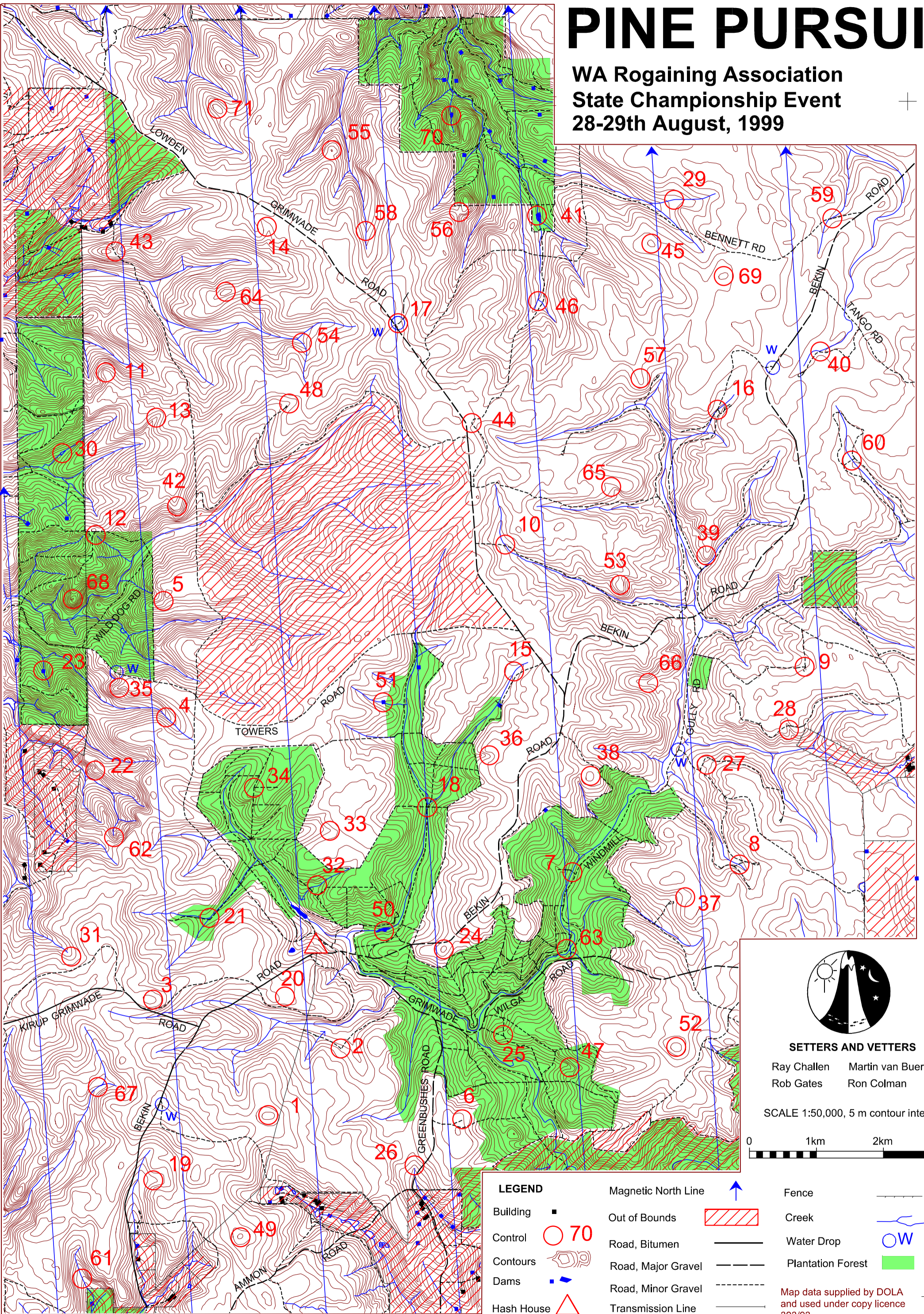


# PINE PURSUIT

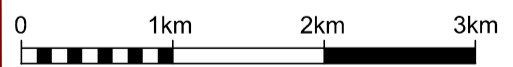
WA Rogaining Association  
State Championship Event  
28-29th August, 1999



## SETTERS AND VETERS

Ray Challen     Martin van Bueren  
Rob Gates     Ron Colman

SCALE 1:50,000, 5 m contour interval



|               |                     |         |  |         |
|---------------|---------------------|---------|--|---------|
| <b>LEGEND</b> | Magnetic North Line | ↑       | Fence  | — — — — |
| Building      | Out of Bounds       | ▨       | Creek  | ~ ~ ~   |
| Control       | Road, Bitumen       | —       | Water Drop   | OW      |
| Contours      | Road, Major Gravel  | - - - - | Plantation Forest  | ■       |
| Dams          | Road, Minor Gravel  | · · · · | Map data supplied by DOLA<br>and used under copy licence<br>393/93 |         |
| Hash House    | Transmission Line   | — — — — |  |         |



# Pine Pursuit, WARA 24 Hour Rogaine, August 28 & 29 1999

| No. | Description                                      | Points | No. | Description  | Points | Important information |
|-----|--|--------|-----|--|--------|-----------------------|
| 1   | The broad summit                                 | 20     | 38  | The broad knoll  | 50     | <b>Control Cards</b>  |
| 2   | The track bend, 20m @ 225 degrees on a pine tree | 20     | 39  | The spur   | 50     |                       |
| 3   | The broad knoll, east side                       | 20     | 40  | The track bend, western corner of a 50m x 50m clearing | 50     | <b>Briefing</b>       |
| 4   | The gully, 50m upstream from a track-crossing    | 20     | 41  | The dam, west side                                     | 50     |                       |
| 5   | The saddle, on a partly overgrown track          | 20     | 42  | The spur   | 50     | <b>Start</b>          |
| 6   | A firetower                                      | 20     | 43  | The saddle, on the track.                              | 50     |                       |
| 7   | The track-creek crossing                         | 20     | 44  | A track junction                                       | 50     | <b>Finish</b>         |
| 8   | The track-creek crossing                         | 20     | 45  | The broad knoll  | 50     |                       |
| 9   | A track junction                                 | 20     | 46  | The creek junction                                     | 50     | <b>Hash House</b>     |
| 10  | The track-creek crossing                         | 20     | 47  | The gully, a rock outcrop.                             | 50     |                       |
| 11  | The spur   | 20     | 48  | The gully, NW edge of a 100m x 100m clearing           | 50     | <b>Sunset</b>         |
| 12  | The head of the gully                            | 20     |     |  |        |                       |
| 13  | The gully  | 20     | 49  | The summit   | 60     | <b>Moonrise</b>       |
| 14  | The shallow gully                                | 20     | 50  | The pool, southern side                                | 60     |                       |
| 15  | The gully, a partly overgrown track              | 20     | 51  | The dam, The dam wall                                  | 60     | <b>Controls Used</b>  |
| 16  | The track-creek crossing                         | 20     | 52  | The broad summit                                       | 60     |                       |
| 17  | A large fallen log on a disused track            | 20     | 53  | A broad knoll  | 60     | <b>Total Points</b>   |
| 18  | The track junction                               | 20     | 54  | A creek junction                                       | 60     |                       |
|     |  |        | 55  | The knoll  | 60     |                       |
| 19  | The shallow gully, a 3m blackboy                 | 40     | 56  | The saddle   | 60     |                       |
| 20  | An abandoned rubbish tip                         | 40     | 57  | A broad knoll  | 60     |                       |
| 21  | The track-creek crossing                         | 40     | 58  | The creek  | 60     |                       |
| 22  | A knoll  | 40     | 59  | The track-creek crossing                               | 60     |                       |
| 23  | The dam  | 40     | 60  | The track-creek crossing                               | 60     |                       |
| 24  | The knoll  | 40     |     |  |        |                       |
| 25  | The track junction                               | 40     | 61  | The gully, a track junction                            | 80     |                       |
| 26  | The head of the gully                            | 40     | 62  | The head of the gully                                  | 80     |                       |
| 27  | The spur   | 40     | 63  | The creek junction, west side of creek.                | 80     |                       |
| 28  | The gully  | 40     | 64  | The broad knoll.                                       | 80     |                       |
| 29  | The gully, a blackboy grove                      | 40     | 65  | The shallow gully                                      | 80     |                       |
| 30  | The dam wall                                     | 40     | 66  | The gully  | 80     |                       |
|     |  |        |     |  |        |                       |
| 31  | The head of the broad gully.                     | 50     | 67  | The creek, edge of thick scrub                         | 100    |                       |
| 32  | The gully, 10m east of a track crossing          | 50     | 68  | The knoll, south east side                             | 100    |                       |
| 33  | The gully, a small stand of young pine trees.    | 50     | 69  | The broad summit                                       | 100    |                       |
| 34  | The track junction, 30m @ 240 degrees.           | 50     | 70  | The dam, below the dam wall                            | 100    |                       |
| 35  | The spur   | 50     | 71  | The knoll  | 100    |                       |
| 36  | The head of the gully                            | 50     |     |  |        |                       |
| 37  | Head of a broad gully.                           | 50     |     |  |        |                       |